

Johns Creek Sub Area 2: Comprehensive and Green Plan Workshop  
Mapping Exercise: March 11, 2008

IP1	Standard Club - Recreational
IP2	Preserve area: Fulton talked about creating a lake by adding a dam to creek to help erosion and pollution problem. Could be an area for public park
IP4	For small remnant parcels, density should be consistent with neighboring density.
IP5	Preserve State Bridge Corridor development patterns
IP8	Preserve rural green nature along Jones Bridge Rd.
IC1	Land use decisions regarding high density
IC2	Webb Park - need access/trails
IC3	Change to recreational area
IC4	Change to public recreational area
IC5	Need more access to Johns Creek for recreational purposes
IC6	Additional vehicular access to school
IC7	Utilize "extra" right-of-way from the realignment of McGinnis and Sergeant as a pocket park
IC8	State Route 120 to State (editors note: unclear reference)

LEGEND

ID = Table/Preserve or Change/Comment #

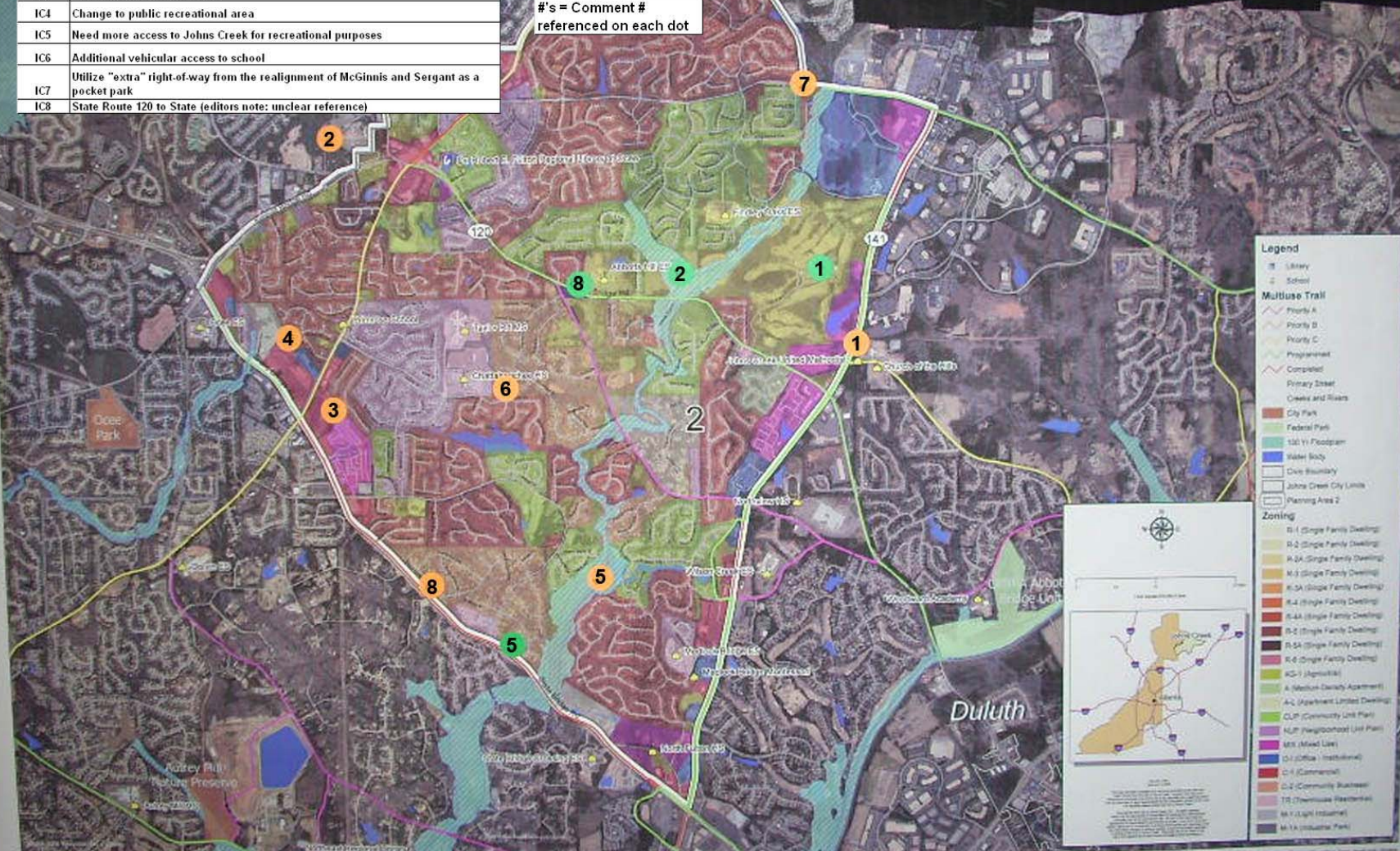
G = Table 1  
H = Table 4  
I = Table 5

P = Preserve  
C = Change

#'s = Comment #  
referenced on each dot

Table 5 (I)  
CITY OF  
**JOHNS CREEK**  
Fulton County, Georgia  
Zoning and Green Plan (Area 2)

Forsyth County



4 For small adjacent parcels, consistency neighboring parcels density maintain ~~the~~ existing density in subarea 2.