

MEMORANDUM



To: Honorable Mayor and City Council
Chris Lagerbloom, Interim City Manager
Planning Commission
Jeanette Marchiafava, City Clerk
Tom Wilson, Director of Community Development
Daniel Drake, PE, AICP, Director of Public Works
Mike Tuller, Deputy Director of Community Development
Sara Leaders, Transportation Planning
Mark Law, Arborist
Deb Harrell, Public Safety
Chad McGiboney, Fire
Outside Agencies

From: Robyn MacDonald, Planner, Community Development

Date: January 14, 2008

Re: Preliminary Zoning Agenda **Community Zoning Information Meeting (CZIM)**
Wednesday, January 23, 2008 - 7:00 PM at City Hall

Design Review Board (DRB)
Tuesday, February 5, 2008 – 6:00 PM at City Hall

Planning Commission
Tuesday, February 26, 2008 - 7:00 PM at City Hall

Mayor and City Council
TBD - 7:00 PM at City Hall

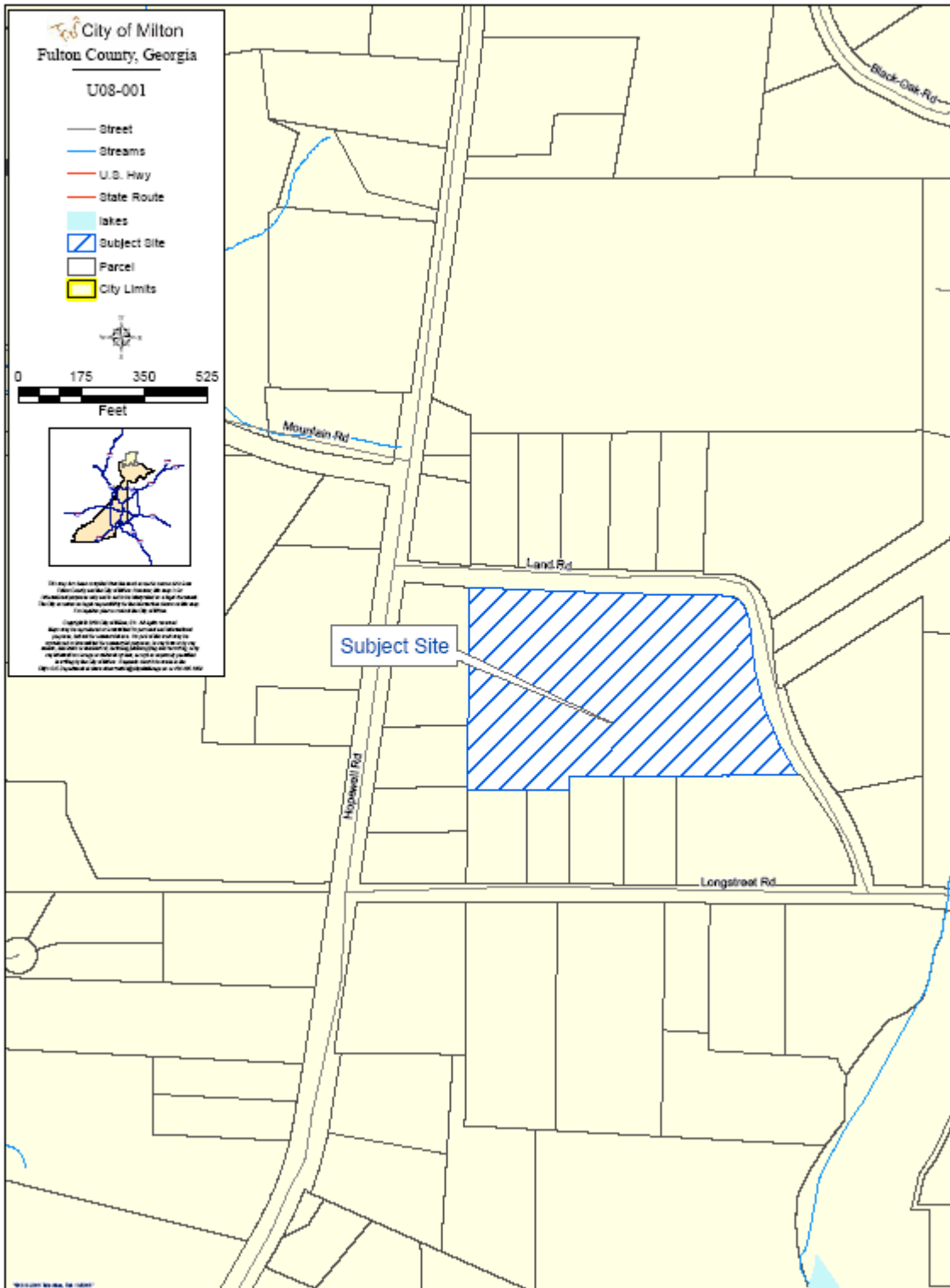
Please submit any comments you have regarding the following cases to Robyn MacDonald, 678-242-2540, **February 11, 2008.**

Please be advised, the material details of the rezoning and use petitions received on or before the December 4, 2007 submittal deadline are as follows:

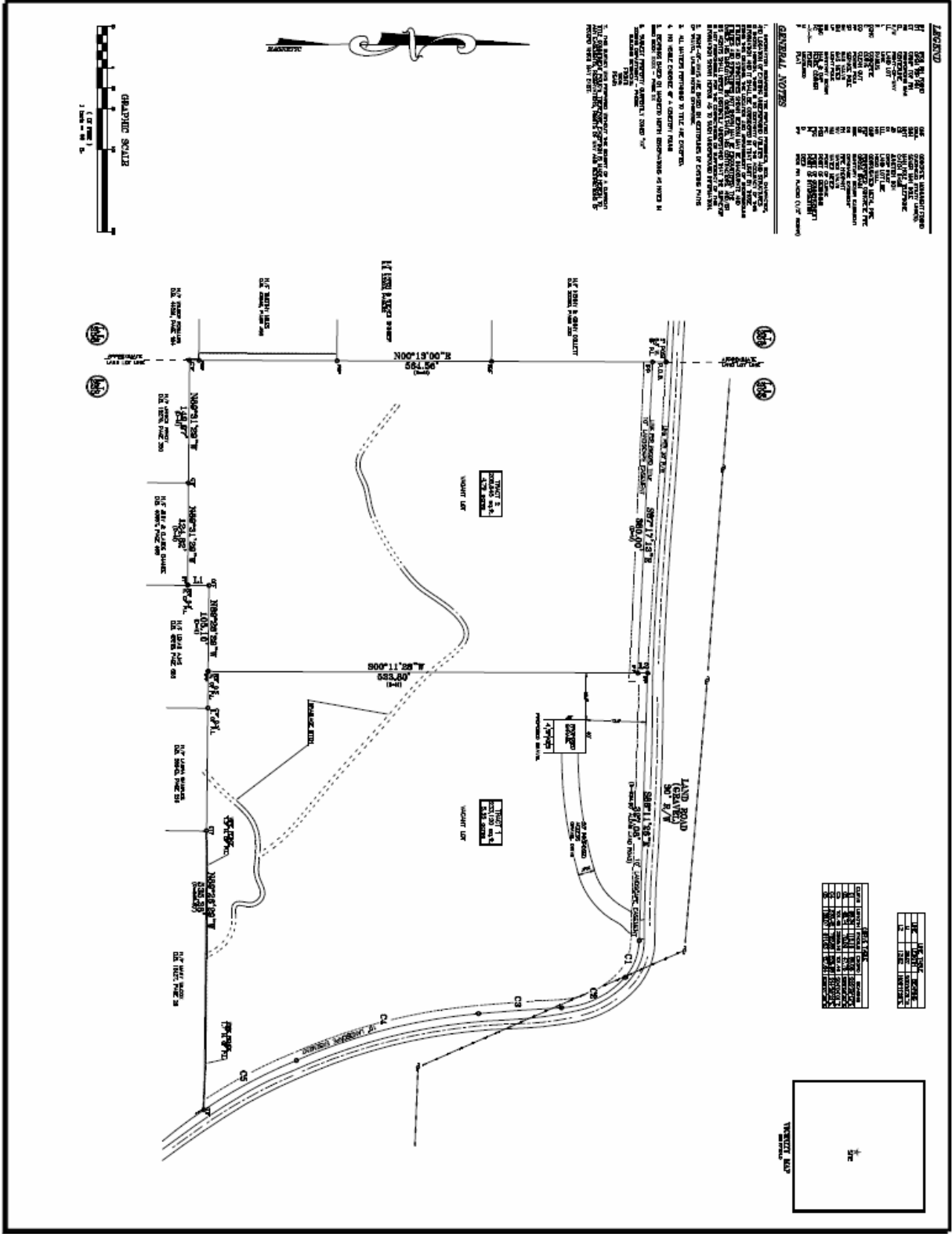
REZONINGS/USE PERMITS

Agenda Item/ Location/Applicant	Request
U08-001 / VC08-001 Land Road Celestino Martinez	To obtain a use permit to develop a landscape business. The applicant is also requesting the following concurrent variance: 1) To allow access from a local road (Article 19.4.27 Section B.1)

LOCATION MAP U08-001/VC08-001



SITE PLAN U08-001/VC08-001



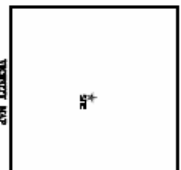
LEGEND

1/4" = 1'00"	1/8" = 1'00"	1/16" = 1'00"	1/32" = 1'00"	1/64" = 1'00"
1/4" = 1'00"	1/8" = 1'00"	1/16" = 1'00"	1/32" = 1'00"	1/64" = 1'00"
1/4" = 1'00"	1/8" = 1'00"	1/16" = 1'00"	1/32" = 1'00"	1/64" = 1'00"
1/4" = 1'00"	1/8" = 1'00"	1/16" = 1'00"	1/32" = 1'00"	1/64" = 1'00"
1/4" = 1'00"	1/8" = 1'00"	1/16" = 1'00"	1/32" = 1'00"	1/64" = 1'00"

GENERAL NOTES

1. THIS SURVEY WAS CONDUCTED IN ACCORDANCE WITH THE SURVEYING ACT OF 1978 AND THE RULES AND REGULATIONS OF THE BOARD OF SURVEYING AND MAPPING OF THE STATE OF GEORGIA.
2. THE SURVEY WAS CONDUCTED ON THE BASIS OF THE RECORD DEEDS AND PLATS REFERRED TO IN THIS PLAN.
3. ALL DISTANCES ARE GIVEN IN FEET AND DECIMALS THEREOF.
4. THE BOUNDARIES OF THE LOTS SHOWN ON THIS PLAN ARE THE RESULT OF THIS SURVEY.
5. THE SURVEY WAS CONDUCTED ON THE BASIS OF THE RECORD DEEDS AND PLATS REFERRED TO IN THIS PLAN.
6. THE SURVEY WAS CONDUCTED ON THE BASIS OF THE RECORD DEEDS AND PLATS REFERRED TO IN THIS PLAN.
7. THE SURVEY WAS CONDUCTED ON THE BASIS OF THE RECORD DEEDS AND PLATS REFERRED TO IN THIS PLAN.
8. THE SURVEY WAS CONDUCTED ON THE BASIS OF THE RECORD DEEDS AND PLATS REFERRED TO IN THIS PLAN.
9. THE SURVEY WAS CONDUCTED ON THE BASIS OF THE RECORD DEEDS AND PLATS REFERRED TO IN THIS PLAN.
10. THE SURVEY WAS CONDUCTED ON THE BASIS OF THE RECORD DEEDS AND PLATS REFERRED TO IN THIS PLAN.

DATE	DESCRIPTION
12-13-07	FINAL SURVEY
12-13-07	FINAL SURVEY
12-13-07	FINAL SURVEY
12-13-07	FINAL SURVEY
12-13-07	FINAL SURVEY



<p>100 #04-104-7487</p>	<p>CELESTINO MARTINEZ</p> <p>LAND LOT 255 2ND SECTION 2ND RANGE</p>	<p>DATE 12-13-07</p> <p>SCALE 1" = 50'</p>	<p>SOLAR LAND SURVEYING COMPANY</p> <p>P.O. BOX 723993 ATLANTA, GEORGIA 31129-0993</p> <p>TELEPHONE (770) 794-9055 FAX (770) 794-9052</p>
<p>ALL MATTERS PERTAINING TO TITLE ARE EXCEPTED</p>		<p>THE STATE OF GEORGIA HAS ACADEMICALLY REVIEWED THIS PLAN AND HAS CONCLUDED THAT IT COMES WITHIN THE REQUIREMENTS OF THE SURVEYING ACT OF 1978 AND THE RULES AND REGULATIONS OF THE BOARD OF SURVEYING AND MAPPING OF THE STATE OF GEORGIA.</p>	